

Rethinking Vitamin D Deficiency Cut-Off Point: A Study Among Healthy Syrian Adults

Maria Kadri Al Tourjuman¹, Zaynab Alourfi^{2*}, Asma Arabi³, Hani Tamim¹ and Lilian Ghandour¹

¹Department of Epidemiology and Public Health, Faculty of Health Sciences, American University of Beirut, Lebanon

²Department of Internal Medicine, Faculty of Medicine, Damascus University, Syria

³Department of Internal Medicine, Faculty of Medicine, American University of Beirut, Lebanon

*Corresponding Author: Zaynab Alourfi, Department of Internal Medicine, Faculty of Medicine, Damascus University, Syria.

Received: March 19, 2019; Published: April 30, 2019

Abstract

Background: There is an ongoing debate on the cut-offs used to indicate vitamin D deficiency due to the discrepancies between the ones established by the Endocrine Society (ES) and the Institute of Medicine (IOM), as well as the populations used to determine these cut-offs, who were mainly Caucasians. This has led to confusion and lack of consensus among clinicians and researchers, and potentially the overestimation of Vitamin D deficiency. This study aimed to explore a vitamin D deficiency cut-off within a sample of Syrian adults, using parathyroid hormone (PTH) to determine the PTH-25OHD inflection point.

Methods: A convenient sample of 372 healthy subjects aged 18 - 62 years participated in this study, 51% of whom were females. A piecewise regression was used to determine the PTH-25OHD inflection point. The association between the newly identified 25OHD cut-off value and total alkaline phosphatase (TAP) was assessed using multivariate regression.

Results: The identified PTH-25OHD inflection point was 13 ng/ml; accordingly, 72% of the participants were vitamin D deficient in contrast to 90% using the established cut-off of 20 ng/ml. Participants with high TAP levels were only 8%, and no association was found between TAP and 25-OHD levels using both the established and identified cut-offs for 25-OHD.

Conclusion: The cut-off indicating vitamin D deficiency in Syrian adults may be different than the one established by the ES. Thus, further studies should be conducted on a larger representative sample of Syrians and using BMD as a biomarker for bone health instead of TAP for more accurate results.

Keywords: Vitamin D Deficiency; 25 Hydroxy Vitamin D; Parathyroid Hormone; Cut-Offs; Inflection Point; Total Alkaline Phosphatase

Introduction

Vitamin D deficiency is a major global concern because of its high prevalence worldwide in people of all ages, regardless of their socio-economic status and ethnicities [1-3] and its link with various ill-health outcomes, including injuries (i.e. risk for fracture, falls) [3,4], non-communicable diseases (i.e. CVDs, cancer, diabetes) [5-7], neuropsychiatric conditions (i.e. depressed mood, cognitive decline) [8-10] and autoimmune conditions [11,12].

Vitamin D deficiency has been commonly determined by measuring 25-hydroxyvitamin D (25-OHD) [13-16], using cut-off scores set based on the level at which parathyroid hormone (PTH) starts to rise [3,17-19]. Still, different cut-off values have been set by the Endocrine Society (ES) and the Institute of Medicine (IOM), whereby desirable 25-OHD levels were set at 30 ng/ml versus 20 ng/ml, respectively [13,20], resulting in confusion among clinicians as well as lack of consensus [13,20,21]. Though widely adopted, these cut-

off points were set based on studies conducted in North America and Canada (NHANES and CaMOS) and on Caucasians [15,20,22]. Some researchers have thus argued that clinicians may thus be over-screening and over-diagnosing vitamin D deficiency, and are thus treating individuals unnecessarily [23-25]. Over-prescribing vitamin D can lead to vitamin D toxicity, associated with anorexia, polyuria, heart and kidney damage [26,27].

Several factors have been shown to affect vitamin D production and ultimately 25-OHD levels in healthy subjects, which vary widely both within and across populations due to environmental, behavioral and cultural differences. These factors include time of day and season (maximum UVB radiation at mid-day in Summer) [28], latitude (higher UVB radiation in lower latitudes) [29,30], skin pigmentation (those with higher melanin concentrations require longer UVB exposure) [31], pollution [32], clothing [33], smoking levels and patterns [27], obesity [34] and diet (fortified food and supplements) [35]. The Middle East and North African region is regarded as one of the sunniest regions globally, as well as the region with the highest proportions of vitamin D deficient populations [36,37]. Several explanations have been provided [38-40] including the possibility of the need for a more context-specific cut-off [41]. Alternative cut-offs have been explored in several populations (i.e. Blacks, Asians and have found PTH-25 OHD inflection points different (lower) than the established ones [23,42-45].

This study aimed to add to the published literature by exploring whether a different cut-off score for Vitamin D deficiency is warranted within the Syrian population, the first of its kind study from the MENA region.

Materials and Methods

Participants

Secondary de-identified data were used as part of a cross-sectional survey conducted in Damascus, Syria between April 2011 and March 2013. Participants were recruited from Al Assad University Hospital using a flyer advertising for the study at the Department of Internal Medicine. Initially, 412 volunteered to participate in the study. A series of laboratory measurements and tests were used to exclude participants who were suffering from any acute or chronic illness, impaired renal or liver function, and intestinal malabsorption; these tests included: serum calcium, phosphorus, albumin, creatinine, total alkaline phosphatase (TAP), alanine transaminase (ALT), aspartate transaminase (AST) and magnesium. Gamma-glutamyl transferase (GGT) was performed for those whose TAP levels were high to exclude any liver disease. Participants who had been taking vitamin D supplements in the preceding 6 months were also excluded, in addition to those taking medication that affect bone metabolism, having a family history of hypocalcemia or vitamin D disorders, pregnant or lactating women within the last 3 years and women who were taking oral contraceptives. The final sample comprised of 372 "healthy" participants, including 184 males and 188 females aged 18 - 62 years.

A written informed consent was obtained from participants [41]. The original study was approved by the Damascus University Review Board (DURB), and the present analyses of secondary data by the American University of Beirut Institutional Review Board (IRB).

Data collection

Medical doctors in their final year of specializing in Endocrinology conducted the face-to-face interviews and drew the morning fasting, blood samples, divided into summertime (May to October) and wintertime (November to April).

Measures

iPTH was measured using automated electrochemiluminescence immunoassay (Elecsys 2010 analyzers, Roche Diagnostics GmbH, Mannheim, Germany). PTH values were recoded to reflect hyperparathyroidism (below and above 65 pg/ml).

Total 25OHD levels were measured using automated electrochemiluminescence immunoassay (Elecsys 2010 analyzers, Roche Diagnostics GmbH, Mannheim, Germany). Since there were only 3 participants with normal levels (above 30 ng/ml), all being males and below the age of 35 years, 25-OHD levels were grouped into those below 20 ng/ml and were categorized as deficient, and those with 25-OHD levels above 20 ng/ml and were categorized as non-deficient.

Total alkaline phosphatase (TAP) was measured by standard colorimetric methods using the Roche Hitachi 912 autoanalyzer (Roche Diagnostics, Mannheim, Germany). TAP was recoded into below 270 (normal) and above 270 (high) for males; and below 240 (normal) and above 240 (high) for females.

Several covariates were also considered, including age (< 35 years, ≥ 35 years), BMI (obese 30 kg/m² and above, not obese below 30 kg/m²), time spent outdoors (≤ 3h/week, > 3h/week), season (winter, summer), phosphorus (below and above 2.5 mg/dl) and corrected calcium (below and above 8.6 mg/dl).

Statistical analysis

Descriptive statistics was reported as frequencies and valid percentages for all categorical variables. As for continuous variables, results were reported as mean± SD for normally distributed variables and as median and inter-quartile intervals for skewed ones.

To identify the 25OHD-PTH inflection point, first the association between 25-OHD and PTH was visualized using a LOWESS scatterplot (Figure 1) and a boxplot of PTH against 1 ng/ml 25-OHD strata (Figure 2). Since PTH is positively skewed, ln PTH was plotted against 25-OHD for the scatterplot. Following the visual depiction of the inflection point, a piecewise regression was performed between ln PTH and 25-OHD to estimate the inflection point reflecting a significant change in the slope between PTH and 25-OHD.

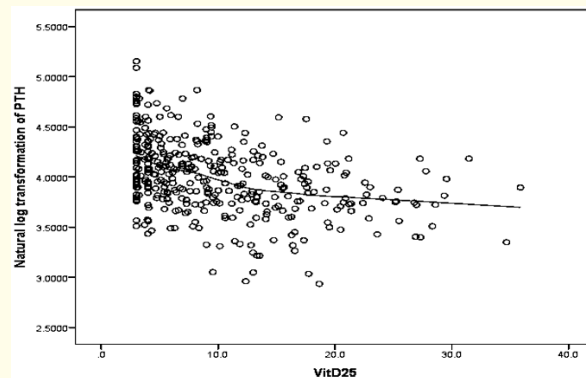


Figure 1: LOWESS Scatterplot Showing the Relationship Between log iPTH and 25-OHD in 372 Participants Recruited from Al-Assad Hospital Between 2011 and 2013.

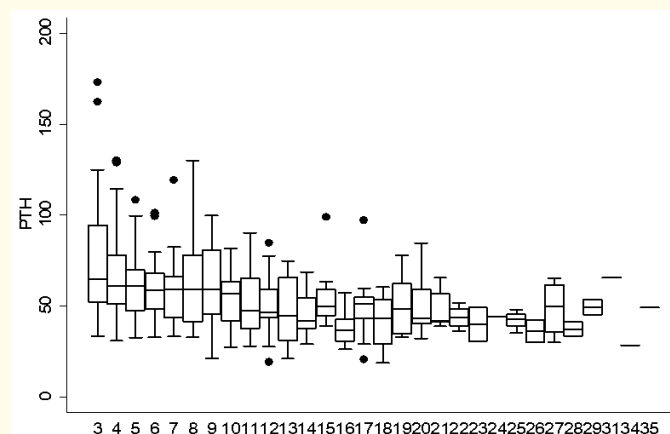


Figure 2: Boxplot Showing the Relation of median iPTH to 1 ng/ml 25-OHD Strata.

Following the identification of the inflection point, 25OHD levels were regrouped. Bivariate analyses were conducted between the ES established and identified 25-OHD levels and various co-variables and TAP. Covariates included were gender, age, BMI, season, time spent outdoors, corrected calcium, phosphorus, iPTH and the established/identified 25-OHD cut-offs. Then a multivariate regression analysis was performed to assess the magnitude of the association between Total Alkaline Phosphatase (TAP) and 25-OHD as per the identified cut-off, controlling for selected covariates statistically significantly related to both 25-OHD and TAP at the bivariate level. The same procedure was done with the cut-off established by the Endocrine Society (20 ng/ml) to compare the findings. Data was analyzed using Stata Software (version 13).

Results

Sample characteristics

Of the total sample, 51% (n = 188) were females, and 44% (n = 164) were aged 35 years and older. Approximately one in four (23.4%, n = 87) were obese. About half (n = 182) were recruited during the winter season (i.e. their blood was drawn in winter months), and 43% (n = 161) spent less than 3 hours per week outdoors (Table 1).

Variables	All (372) N (%)	Gender			Age		
		Males (184, 49.0)	Females (188, 51.0)	p-value	Below 35 (208, 55.9)	35 and above (164, 44.1)	p-value
Age group (35 and above)	164 (44.0)	64 (34.8)	100 (53.2)	< 0.001			
Gender (female)					88 (42.3)	100 (60.9)	< 0.001
Education (secondary or less)	99 (28.0)	37 (20.6)	62 (35.6)	0.002	30 (14.9)	69 (45.4)	< 0.001
Time spent outdoor (≤ 3h/week)	161 (43.3)	46 (25.0)	115 (61.2)	< 0.001	77 (37.1)	84 (51.5)	0.006
BMI (obese)	87 (23.4)	47 (25.5)	40 (21.3)	0.331	27 (13.0)	60 (36.6)	< 0.001
Season (winter)	182 (49.0)	87 (47.3)	95 (51.1)	0.466	94 (45.4)	88 (54.0)	0.101
Corrected Calcium (< 8.6 mg/dL)	23 (6.2)	12 (6.5)	11 (5.9)	0.788	13 (6.3)	10 (6.1)	0.952
Phosphorus (< 2.5 mg/dL)	7 (1.9)	4 (2.2)	3 (1.6)	0.682	2 (1.0)	5 (3.0)	0.139
iPTH (> 65 pg/mL)	113 (30.4)	33 (18.0)	80 (42.6)	< 0.001	44 (21.2)	69 (42.1)	< 0.001
TAP (high)	31 (8.4)	12 (6.5)	19 (10.2)	0.2	11 (5.3)	20 (12.3)	0.016
25-OHD (< 20 ng/mL)	335 (90.0)	153 (83.0)	182 (97.0)		183 (88.0)	152(92.7)	
20 < 30 ng/ml	34 (9.0)	28 (15.0)	6 (3.0)	< 0.001	22 (10.6)	12 (7.3)	0.161
≥ 30 ng/ml	3 (1%)	3 (2.0)	0		3 (1.4)	0	

Table 1: Study population characteristics by gender and age.

Clinical profile of the sample

As per the ES guidelines, 90% (n = 335) of the sample were vitamin D deficient (< 20 ng/ml), 9% (n = 34) had insufficient levels (20 - 30 ng/ml) and only 1% (n = 3) were considered to have normal levels (> 30 ng/ml).

Around 30% of the participants had hyperparathyroidism (iPTH levels above 65 pg/ml), which was more prevalent in females (42.6%) than in males (18%) (p-value < 0.001) and those 35 years old and above (42.1% versus 21.2% in < 35 years, p-value < 0.001).

As for TAP, the majority had normal levels (92%). No gender differences were observed for high TAP levels (10.2% females versus 6.5% of the males, p-value = 0.2), but differences by age groups were noted, whereby 5.3% of those below 35 had high levels of TAP compared to 12.3% of those above 35 (p-value = 0.016).

Hypocalcemia and hypophosphatemia were only seen in 6.2% and 1.9% of the sample, respectively, with no significant differences by gender or age (Table 1).

Laboratory results were also looked at as continuous variables as seen in table 2. All participants results' mean and median values were within the normal range except for 25-OHD (median = 8.02 ng/ml; IQR = 4.07, 13.49), which is much lower than the normal ranges set by both the ES and IOM (≥ 30 and ≥ 20 ng/ml respectively). As expected, median 25-OHD for samples drawn in winter time (median = 6.6 ng/ml; IQR = 4, 10.6) were much lower than those drawn in summer time (median = 10 ng/ml; IQR = 5.2, 16.32) since winter is an established risk factor for vitamin D deficiency.

	25-OHD (ng/ml)	25-OHD (ng/ml) in winter	25-OHD (ng/ml) in summer	iPTH (pg/ml)	TAP (U/L)	Corrected Calcium (mg/dl)	Phosphate (mg/dl)
Normal Reference Range used in Syria	≥ 30 (ES), ≥ 20 (IOM)	≥ 30 (ES), ≥ 20 (IOM)	≥ 30 (ES), ≥ 20 (IOM)	10 - 65	80 - 270 (M), < 240 (F)	8.6 - 10.1	2.5 - 4.5
Mean	9.89	8.2	11.48	58.94	180.30	9.14	3.61
SD	6.77	5.56	6.76	22.95	51.57	0.34	0.51
Median	8.02	6.6	10	55.02	170.00	9.15	3.60
IQ interval	4.07 - 13.49	4 - 10.6	5.2 - 16.32	43.06 - 68.84	144 - 209	8.93 - 9.36	3.30 - 3.97

Table 2: Distribution of laboratory results in the total study sample.

25-OHD and PTH: Determining the Inflection Point in the Syrian Population

As seen in figure 1, the association between ln iPTH and 25-OHD is not linear, and the slope changes at 25-OHD levels of around 12 ng/ml. This is also illustrated in figure 2, where there is a significant change in the median iPTH starting at 11 ng/ml 25-OHD, whereby iPTH medians are high below 11 ng/ml 25-OHD levels and start decreasing at a steady state above it. The piecewise regression confirmed the above and estimated the slope to change at 13.26 ng/ml (Figure 3).

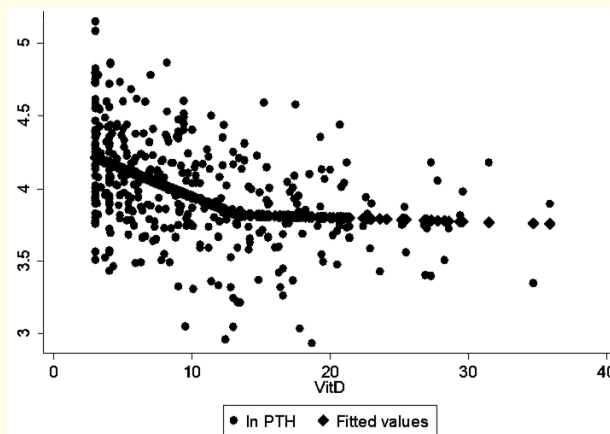


Figure 3: Piecewise regression between log iPTH and 25-OHD.

Association between sample characteristics and vitamin D deficiency using the established and identified cut-offs

According to the identified cut-off of 13 ng/ml, 72% of the participants were regarded as deficient compared to 90% as per the ES established cut-off of 20 ng/ml. In both cut-offs, factors that were significantly associated with 25-OHD were gender (females more likely to be deficient), time spent outdoors (less than 3h/week outdoors), winter season and iPTH levels (having hyperthyroidism) (Table 3).

Variables	25-OHD concentration using a cut-off of 20ng/ml				25-OHD concentration using a cut-off of 13 ng/ml			
	N (%) below 20 ng/ml	N (%) above 20 ng/ml	p-value	U-OR	N (%) below 13 ng/ml	N (%) above 13 ng/ml	p-value	U-OR
Gender (female)	182 (54.3)	6 (16.2)	< 0.0001	6.25 (2.50, 14.28)	158 (58.7)	30 (29.1)	< 0.0001	3.46 (2.12, 5.65)
Age 35 and above	152 (45.4)	12 (32.4)	0.132	1.73 (0.83, 3.57)	123 (45.7)	41 (39.8)	0.259	1.30 (0.82, 2.06)
Time spent out-door (≤ 3h/week)	154 (46.2)	7 (18.9)	0.001	3.68 (1.57, 8.63)	126 (47.2)	35 (34.0)	0.022	1.74 (1.08, 2.78)
Secondary or less education	89 (28.0)	10 (27.8)	0.979	1.01 (0.47, 2.18)	75 (29.3)	24 (24.5)	0.367	1.28 (0.75, 2.18)
Winter season	172 (51.7)	10 (27.0)	0.004	2.88 (1.35, 6.15)	149 (55.8)	33 (32)	< 0.0001	2.68 (1.66, 4.32)
BMI 30 and above	80 (23.9)	7 (18.9)	0.499	1.34 (0.57, 3.17)	69 (25.7)	18 (17.5)	0.084	1.66 (0.93, 2.93)
Corrected Calcium (< 8.6 mg/dL)	23 (6.9)	0	0.1		19 (7.1)	4 (3.9)	0.243	1.90 (0.66, 5.48)
Phosphorus (< 2.5 mg/dL)	6 (1.8)	1 (2.7)	0.699	0.66 (0.07, 5.07)	4 (1.5)	3 (2.9)	0.375	0.51 (0.12, 2.07)
iPTH (> 65 pg/ml)	109 (32.5)	4 (10.8)	0.006	3.98 (1.43, 11.03)	101 (37.5)	12 (11.7)	< 0.0001	4.64 (2.44, 8.80)
TAP (high)	27 (8.0)	4 (10.8)	0.569	0.72 (0.25, 2.10)	21 (7.4)	10 (9.6)	0.584	0.80 (0.37, 1.75)

Table 3: Association between 25-OHD and sample characteristics.

When looking at the association between the sample characteristics and the established cut-off (25-OHD levels of 20 ng/ml), it was found that females were 6.25 times more likely to have vitamin D deficiency compared to males (p value < 0.0001; CI = 2.5, 14.28). Also, those who spent less than 3h/week outdoors were 3.68 more likely to be vitamin D deficient than those spending more than 3 h/week (p-value = 0.001; CI = 1.57, 8.63). In addition, participants who had their blood samples drawn in winter were 2.88 more likely to have vitamin D deficiency than those who had their samples drawn in summer season (p-value = 0.004; CI = 1.35, 6.15). As for iPTH, it was found that those with secondary hyperparathyroidism were 3.98 more likely to have 25-OHD levels below 20 ng/ml compared to those with normal iPTH levels (p-value = 0.006; CI = 1.43, 11.03).

As for the association between the sample characteristics and the identified 25-OHD cut-off, females were 3.46 times more likely to have vitamin D deficiency than males (p-value < 0.0001; CI = 2.12, 5.65) as opposed to 6.25 in the established cut-off. Spending less than 3 h/week outdoors remained significant (p-value = 0.022) but the association was relatively weak as the OR was 1.74 (CI = 1.08, 2.78). As for having the blood sample drawn in winter season, it also remained significantly positively associated with vitamin D deficiency (p-value < 0.0001; U-OR = 2.68; CI = 1.66, 4.32). Finally, the association between iPTH and vitamin D deficiency increased both in statistical significance and strength of association, whereby those with levels above 65 ng/ml were 4.64 times more likely to have vitamin D deficiency as opposed to those with normal iPTH levels (p-value < 0.0001; CI = 2.44, 8.8) (Table 3).

Exploring the association between TAP and 25-OHD levels using the established/suggested 25-OHD cut-off values

All correlates that had a p-value of < 0.2 in the bivariate analyses looking at associations with 25-OHD or TAP were included in the multivariate analyses. The association between TAP and 25-OHD was not statistically significant using both cut-offs of 20 ng/ml and 13 ng/ml (p-value = 0.247 and p-value = 0.163, respectively) (Table 4).

	25-OHD below 13 ng/ml	25-OHD below 20 ng/ml
Variables	A-OR	A-OR
25-OHD	0.52 (0.21, 1.30)	0.48 (0.14, 1.65)
Gender (female)	1.64 (0.66, 4.05)	1.56 (0.63, 3.87)
Age 35 and above	2.20 (0.95, 5.16)	2.27 (0.46, 3.09)
Time spent outdoor (\leq 3h/week)	0.94 (0.40, 2.20)	0.97 (0.41, 2.28)
Winter season	1.67 (0.72, 3.82)	1.52 (0.67, 3.46)
BMI 30 and above	1.61 (0.67, 3.81)	1.47 (0.62, 3.49)
Corrected Calcium (< 8.6 mg/dL)	1.48 (0.31, 7.17)	1.46 (0.30, 7.10)
Phosphorus (< 2.5 mg/dL)	2.54 (0.41, 15.71)	2.66 (0.45, 17.84)
iPTH (> 65 pg/ml)	1.05 (0.44, 2.52)	0.95 (0.41, 2.24)

Table 4: Model predicting the association between 25-OHD and TAP in the total study sample of 372 participants, controlling for selected covariates.

A-OR: Adjusted Odds Ratio.

Discussion and Conclusion

This study suggests that a 25-OHD level of 13 ng/ml may be warranted, which is lower than the established cut-off of 20 ng/ml by the ES [13], resulting in a lower percentage of Syrians being identified as vitamin D deficient (72% versus 90%, respectively).

Several other studies have also advocated for different cut-off points for vitamin D deficiency. In a study conducted to explore potentially different cut-offs for black and white females, it was found that the inflection point differed significantly for black women (14.8 ng/ml) compared to white women (23.6 ng/ml) [42]. In another study done on a Chinese population, it was found that the inflection point was 12.8 ng/ml [45], which is also lower than that proposed by the ES and very similar in value to the inflection point found in this study. In fact, the value found in this study is closer to the one established by the IOM [20]. Still, while the IOM suggests that at 25-OHD levels of 10 ng/ml bone health is affected, this study found no effect between the identified cut-off of 13 ng/ml and bone health. This might be due to the fact that TAP was chosen to reflect bone health instead of bone mineral density (BMD) or biochemical markers of bone turnover. While most studies use bone mineral density (BMD) as a measure of bone health due to its relationship with 25-OHD and PTH [8,20], still, ALP has been used as a biomarker for bone health [46]. Alternatively, it could be that even at low vitamin D levels, the population's bone health isn't affected. In fact, the effect of low vitamin D on bone health has been shown in Caucasians [23], but not African American immigrants in the US [47] and the authors concluded that race-specific guidelines need to be developed [48,49].

It is clear that the prevalence of vitamin D deficiency is affected by the cut-off chosen, where the percentage of people identified as vitamin D deficient in this study sample is 20% lower using the identified versus the established cut-offs. Nevertheless, there is still a high prevalence of vitamin D deficiency even when using the newly identified cut-off, potentially explained by other factors such as inadequate vitamin D intake, conservative clothing style, urban living, insufficient sun exposure and obesity, all of which are risk factors related to the high prevalence of vitamin D deficiency in the MENA region [36,39,40,50,51].

The findings need to be considered in light of some limitations. First, the study sample was conveniently sampled from a large university hospital and does not constitute a representative sample of the Syrian population. Still, the strict inclusion criteria and thorough examinations helped ensure that participants were healthy and that the results were internally valid. While not representative,

the sample is assumed to be heterogeneous since Al-Assad hospital is a big public referral hospital that Syrians from different areas seek for health care. The sample size also impeded any sub-group analyses, particularly by gender. As for the measurement issues, the use of electrochemiluminescence immunoassay to measure 25-OHD instead of Liquid Chromatography tandem Mass Spectroscopy (LC-MS), the gold standard for measuring 25-OHD [52,53], may have also impacted the results due to the variability between the assays. Furthermore, financial constraints prevented the use of Bone Mineral Density (BMD), which is the “gold standard” for measuring bone health (osteoporosis) [54,55].

An off-setting strength is the contribution of this study to the debate surrounding vitamin D deficiency and the established cut-offs. To the best of our knowledge, no published studies from the MENA region have explored possible alternative cut-offs except one study in Iran, which aimed at finding a cut-off point for vitamin D deficiency based on insulin resistance in children, and found that the most appropriate vitamin D deficiency cut-off was 11.6 ng/ml [56].

It is recommended that further studies are conducted on representative samples of the population, using gold standard measures, and large enough samples to explore potential differences by gender and age [57].

Funding

This research did not receive any specific grant from funding agencies in the public, commercial, or not-for-profit sectors.

Bibliography

1. Holick Michael F and Tai C Chen. “Vitamin D Deficiency: A Worldwide Problem with Health Consequences”. *The American Journal of Clinical Nutrition* 87.4 (2008): 1080S-1086S.
2. Wahl DA., et al. “A Global Representation of Vitamin D Status in Healthy Populations”. *Archives of Osteoporosis* 7.1-2 (2012): 155-172.
3. Holick Michael F. “Vitamin D Deficiency”. *New England Journal of Medicine* 357.3 (2007): 266-281.
4. Broe Kerry E., et al. “A Higher Dose of Vitamin D Reduces the Risk of Falls in Nursing Home Residents: A Randomized, Multiple-Dose Study”. *Journal of the American Geriatrics Society* 55.2 (2007): 234-239.
5. John Esther M., et al. “Vitamin D and Breast Cancer Risk: The Nhanes I Epidemiologic Follow-up Study, 1971–1975 to 1992”. *Cancer Epidemiology and Prevention Biomarkers* 8.5 (1999): 399-406.
6. Li Yan Chun. “Vitamin D Regulation of the Renin–Angiotensin System”. *Journal of Cellular Biochemistry* 88.2 (2003): 327-331.
7. Dobnig Harald., et al. “Independent Association of Low Serum 25-Hydroxyvitamin D and 1, 25-Dihydroxyvitamin D Levels with All-Cause and Cardiovascular Mortality”. *Archives of Internal Medicine* 168.12 (2008): 1340-1349.
8. Littlejohns Thomas J., et al. “Vitamin D and the Risk of Dementia and Alzheimer Disease”. *Neurology* 83.10 (2014): 920-928.
9. Wilkins Consuelo H., et al. “Vitamin D Deficiency Is Associated with Low Mood and Worse Cognitive Performance in Older Adults”. *The American Journal of Geriatric Psychiatry* 14.12 (2006): 1032-1040.
10. Munger Cassandra L., et al. “Vitamin D Intake and Incidence of Multiple Sclerosis”. *Neurology* 62.1 (2004): 60-65.
11. Merlino Linda A., et al. “Vitamin D Intake Is Inversely Associated with Rheumatoid Arthritis: Results from the Iowa Women’s Health Study”. *Arthritis and Rheumatology* 50.1 (2004): 72-77.
12. Hyppönen Elina., et al. “Intake of Vitamin D and Risk of Type 1 Diabetes: A Birth-Cohort Study”. *The Lancet* 358.9292 (2001): 1500-1503.

13. Holick Michael F., *et al.* "Evaluation, Treatment, and Prevention of Vitamin D Deficiency: An Endocrine Society Clinical Practice Guideline". *The Journal of Clinical Endocrinology and Metabolism* 96.7 (2011): 1911-1930.
14. DeLuca Hector F. "Overview of General Physiologic Features and Functions of Vitamin D". *The American Journal of Clinical Nutrition* 80.6 (2004): 1689S-1696S.
15. Greene-Finestone LS., *et al.* "25-Hydroxyvitamin D in Canadian Adults: Biological, Environmental, and Behavioral Correlates". *Osteoporosis International* 22.5 (2011): 1389-1399.
16. Bischoff-Ferrari Heike A., *et al.* "Benefit-Risk Assessment of Vitamin D Supplementation". *Osteoporosis International* 21.7 (2010): 1121-1132.
17. Dawson-Hughes Bess., *et al.* "Plasma Calcidiol, Season, and Serum Parathyroid Hormone Concentrations in Healthy Elderly Men and Women". *The American Journal of Clinical Nutrition* 65.1 (1997): 67-71.
18. Chapuy M-C., *et al.* "Prevalence of Vitamin D Insufficiency in an Adult Normal Population". *Osteoporosis international* 7.5 (1997): 439-443.
19. Del Valle Heather B., *et al.* "Dietary Reference Intakes for Calcium and Vitamin D". National Academies Press (2011).
20. Ross A Catharine., *et al.* "The 2011 Report on Dietary Reference Intakes for Calcium and Vitamin D from the Institute of Medicine: What Clinicians Need to Know". *The Journal of Clinical Endocrinology and Metabolism* 96.1 (2011): 53-58.
21. Bouillon Roger., *et al.* "Optimal Vitamin D Status: A Critical Analysis on the Basis of Evidence-Based Medicine". *The Journal of Clinical Endocrinology and Metabolism* 98.8 (2013): E1283-E1304.
22. El-Hajj Fuleihan Ghada., *et al.* "Serum 25-Hydroxyvitamin D Levels: Variability, Knowledge Gaps, and the Concept of a Desirable Range". *Journal of Bone and Mineral Research* 30.7 (2015): 1119-1133.
23. Gutierrez OM., *et al.* "Racial Differences in the Relationship between Vitamin D, Bone Mineral Density, and Parathyroid Hormone in the National Health and Nutrition Examination Survey". *Osteoporosis International* 22.6 (2011): 1745-1753.
24. Looker Anne C., *et al.* "Serum 25-Hydroxyvitamin D Status of Adolescents and Adults in Two Seasonal Subpopulations from Nhanes Iii". *Bone* 30.5 (2002): 771-777.
25. Manson JoAnn E., *et al.* "Vitamin D Deficiency-Is There Really a Pandemic?" *New England Journal of Medicine* 375.19 (2016): 1817-1820.
26. Koul Parvaiz A., *et al.* "Vitamin D Toxicity in Adults: A Case Series from an Area with Endemic Hypovitaminosis D". *Oman Medical Journal* 26.3 (2011): 201-204.
27. Maji Debasish. "Vitamin D Toxicity". *Indian Journal of Endocrinology and Metabolism* 16.2 (2012): 295-296.
28. Webb Ann R and Ola Engelsen. "Ultraviolet Exposure Scenarios: Risks of Erythema from Recommendations on Cutaneous Vitamin D Synthesis". *Sunlight, Vitamin D and Skin Cancer*. Springer (2008): 72-85.
29. Laird Eamon., *et al.* "The Prevalence of Vitamin D Deficiency and the Determinants of 25 (Oh) D Concentration in Older Irish Adults: Data from the Irish Longitudinal Study on Ageing (Tilda)". *The Journals of Gerontology: Series A* 73.4 (2017): 519-525.
30. Webb Ann R., *et al.* "Influence of Season and Latitude on the Cutaneous Synthesis of Vitamin D3: Exposure to Winter Sunlight in Boston and Edmonton Will Not Promote Vitamin D3 Synthesis in Human Skin". *The Journal of Clinical Endocrinology and Metabolism* 67.2 (1988): 373-378.

31. Xu Cuiling, *et al.* "Determinants of Serum 25-Hydroxyvitamin D in Hong Kong". *British Journal of Nutrition* 114.1 (2015): 144-151.
32. Kelishadi Roya, *et al.* "Independent Association between Air Pollutants and Vitamin D Deficiency in Young Children in Isfahan, Iran". *Paediatrics and International Child Health* 34.1 (2014): 50-55.
33. Davis Sandra, *et al.* "Clothing as Protection from Ultraviolet Radiation: Which Fabric Is Most Effective?" *International Journal of Dermatology* 36.5 (1997): 374-379.
34. Wortsman Jacobo, *et al.* "Decreased Bioavailability of Vitamin D in Obesity". *The American Journal of Clinical Nutrition* 72.3 (2000): 690-693.
35. Lips PTAM. "Worldwide Status of Vitamin D Nutrition". *The Journal of Steroid Biochemistry and Molecular Biology* 121.1-2 (2010): 297-300.
36. Mithal Ambrish, *et al.* "Global Vitamin D Status and Determinants of Hypovitaminosis D". *Osteoporosis International* 20.11 (2009): 1807-1820.
37. Fuleihan Ghada El-Hajj. "Vitamin D Deficiency in the Middle East and Its Health Consequences for Children and Adults". *Clinical Reviews in Bone and Mineral Metabolism* 7.1 (2009): 77-93.
38. Ghazi AA Mirsaeid, *et al.* "Seasonal Variation of Serum 25 Hydroxy D3 in Residents of Tehran". *Journal of Endocrinological Investigation* 27.7 (2004): 676-679.
39. Meddeb N, *et al.* "Vitamin D Deficiency in Tunisia". *Osteoporosis International* 16.2 (2005): 180-183.
40. Mishal AA. "Effects of Different Dress Styles on Vitamin D Levels in Healthy Young Jordanian Women". *Osteoporosis International* 12.11 (2001): 931-935.
41. Sayed-Hassan Rima, *et al.* "Relationship between 25-Hydroxyvitamin D Concentrations, Serum Calcium, and Parathyroid Hormone in Apparently Healthy Syrian People". *Archives of Osteoporosis* 9.1 (2014): 176.
42. Aloia John F, *et al.* "The 25 (Oh) D/Pth Threshold in Black Women". *The Journal of Clinical Endocrinology and Metabolism* 95.11 (2010): 5069-5073.
43. Hannan Marian T, *et al.* "Serum 25-Hydroxyvitamin D and Bone Mineral Density in a Racially and Ethnically Diverse Group of Men". *The Journal of Clinical Endocrinology and Metabolism* 93.1 (2008): 40-46.
44. Choi Seong-Woo, *et al.* "Estimation of the Cutoff Value of Vitamin D: The Dong-Gu Study". *Journal of Physiological Anthropology* 34.1 (2015): 10.
45. Leung Raymond YH, *et al.* "Optimal Vitamin D Status and Its Relationship with Bone and Mineral Metabolism in Hong Kong Chinese". *Bone* 97 (2017): 293-298.
46. Jesudason D, *et al.* "Relationship between Serum 25-Hydroxyvitamin D and Bone Resorption Markers in Vitamin D Insufficiency". *Bone* 31.5 (2002): 626-630.
47. Thoreson Caroline K, *et al.* "Biochemical and Clinical Deficiency Is Uncommon in African Immigrants Despite a High Prevalence of Low Vitamin D: The Africans in America Study". *Osteoporosis International* 26.11 (2015): 2607-2615.
48. Barrett-Connor Elizabeth, *et al.* "Osteoporosis and Fracture Risk in Women of Different Ethnic Groups". *Journal of Bone and Mineral Research* 20.2 (2005): 185-194.

49. Cauley Jane A., *et al.* "Serum 25-Hydroxyvitamin D and Clinical Fracture Risk in a Multiethnic Cohort of Women: The Women's Health Initiative (Whi)". *Journal of Bone and Mineral Research* 26.10 (2011): 2378-2388.
50. Ardawi M-SM., *et al.* "Vitamin D Status in Relation to Obesity, Bone Mineral Density, Bone Turnover Markers and Vitamin D Receptor Genotypes in Healthy Saudi Pre-and Postmenopausal Women". *Osteoporosis International* 22.2 (2011): 463-475.
51. Ardawi M-SM., *et al.* "High Prevalence of Vitamin D Deficiency among Healthy Saudi Arabian Men: Relationship to Bone Mineral Density, Parathyroid Hormone, Bone Turnover Markers, and Lifestyle Factors". *Osteoporosis International* 23.2 (2012): 675-686.
52. Holick Michael F. "Vitamin D Status: Measurement, Interpretation, and Clinical Application". *Annals of Epidemiology* 19.2 (2009): 73-78.
53. Zerwekh Joseph E. "Blood Biomarkers of Vitamin D Status". *The American Journal of Clinical Nutrition* 87.4 (2008): 1087S-1091S.
54. Shetty Sahana., *et al.* "Bone Turnover Markers: Emerging Tool in the Management of Osteoporosis". *Indian Journal of Endocrinology and Metabolism* 20.6 (2016): 846-852.
55. Meeta Leela Digumarti., *et al.* "Clinical Practice Guidelines on Menopause: An Executive Summary and Recommendations". *Journal of Mid-Life Health* 4.2 (2013): 77-106.
56. Sharifi Faranak., *et al.* "Defining a Cutoff Point for Vitamin D Deficiency Based on Insulin Resistance in Children". *Diabetes and Metabolic Syndrome: Clinical Research and Reviews* 7.4 (2013): 210-213.
57. Rosen Clifford J., *et al.* "Iom Committee Members Respond to Endocrine Society Vitamin D Guideline". *The Journal of Clinical Endocrinology and Metabolism* 97.4 (2012): 1146-1152.

Volume 4 Issue 3 May 2019

©All rights reserved by Zaynab Alourfi., *et al.*